

**SpiderAlert®**

## Artwork Security System

A masterpiece of art  
protection



# SpiderAlert®

## Artwork Security System

### A masterpiece of art protection

*The security of valuable works of arts presents a number of serious questions to gallery and museum management and to private collectors. These questions arise from the accessibility of artworks and galleries to visitors, the overall security of the buildings and facilities themselves.*

### *The best answer to these questions is the SpiderAlert Artwork Security System.*

*The SpiderAlert Artwork Security System provides the coverage every type of museum or gallery needs. Individual works of art, whether hung or freestanding, are protected by SpiderAlert during visiting hours, not just when the building, gallery or exhibit area is closed. By using the SpiderAlert network of anti-jamming wireless and wired security components, and specialized wireless detectors for the protection of a wide variety of types of works of art, the risk of theft, assault and break-in, and the response time when an event occurs, can be reduced considerably.*

### *SpiderAlert for high sensitivity, reliable detection and round-the-clock protection*

#### **SpiderAlert for the protection of works of art**

*Art exhibition areas are environments that are generally open to the public. Although visitors may not be permitted to actually approach objects on display, someone, for whatever reason, might attempt to touch or remove an item. The SpiderAlert Artwork Security System is the ideal response to occasional theft, as well as to professional or planned burglary. SpiderAlert provides several wireless, non-invasive (non-injurious) detectors that are sensitive to movement or removal of artworks. The detectors are suitable for mounted framed or unframed paintings and hangings, freestanding and encased sculptures and installations. The advantages of wireless detectors are that they can be invisible, have no obtrusive wires and are as reliable as hardwired units. Because of its flexibility, SpiderAlert is ideal for traveling exhibits. The system can be taken down and remounted to suit various exhibit configurations accordingly.*

#### **SpiderAlert means a system you can rely on**

*SpiderAlert components communicate with the on-site monitoring and control center. The system is connected along a control network to a central station and computer, and utilizes its own special user-friendly software program, where events can be monitored and logged. Every room, hall or gallery, every art object is part of this interconnected system. The moment something arises - a painting is moved or a break-in occurs - an audible or silent alarm is activated, and the central monitor is notified for an immediate response.*

*The SpiderAlert Artwork Security System is a network that has been created for the future. It can always be expanded, updated and upgraded, even after only the most basic parts of the network have been installed.*



**Visonetix**

**1 SPD-1000**

Magnetic detector  
Stick or screw behind frame,  
emboss under object



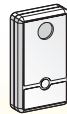
**2 SPD-2000**

Position detector  
Screw behind frame



**3 SPD-3000**

Canvas removal detector  
Attach to wall behind canvas  
or a hole on the back paper



**12 SRP-51 UPS**

SpiderBus  
repeater

**10 SLC-5 UPS**

SpiderBus  
controller

**9 SAM-5**

SpiderAlert  
software

CCTV Camera

SpiderBus

Centr

**11 SR-500**

Wireless receiver

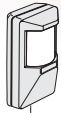
**4 SPD-1500**

Wireless Microswitch  
Mechanical and magnetic  
emboss under object



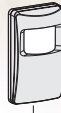
**5 MCT-100 S**

Universal wireless  
transmitter



**6 MCP-2000 S**

PIR detector  
Attach to case's  
corner or floor



**7 MCP-3000 S**

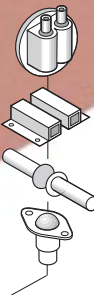
PIR detector  
Attach to case's  
corner or floor

**8 MCT-302 S**

Wireless  
transmitter

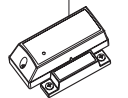


Microswitch  
Magnetic Contacts  
Vibration detector  
wire to inputs of  
wireless transmitter



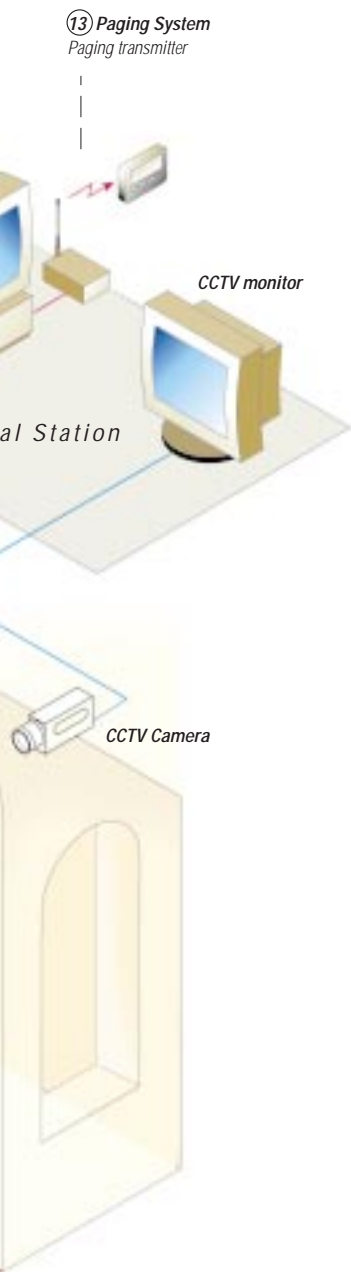
**8 MCT-302 S**

Wireless magnetic con  
attach to case's door





# SpiderAlert Artwork Security System Components



## Wireless artwork protection components:

### ① SPD-1000

#### Wireless magnetic-field motion detector

The SPD-1000 is a fully supervised wireless movement detector for wall-attached works of art that signals to the system whenever the object is moved. The unit is held in place to the obverse of the artwork using double-sided stickers or screws.

### ② SPD-2000

#### Wireless spatial position detector

The SPD-2000 is a fully supervised wireless position change detector for painting protection. The product is attached behind the frame of the painting and "learns" its initial position in the surrounding space. The unit has four sensitivities of operation: touch, slide, move, test. Any movement of the painting sends an alarm signal to the system. A return to the initial position sends a restore signal. An accelerated supervision signal upon alarm allows for tracking the painting so long as the product is attached.

### ③ SPD-3000

#### Wireless painting removal detector

The SPD-3000 is a fully supervised wireless passive infrared detector for painting removal protection. The product is attached to the wall behind the painting or behind a hole in the backing paper of the painting. Any attempt to remove the painting exposes the detector to infrared energy that triggers an alarm signal to the system.

### ④ SPD-1500

#### Wireless microswitch

For freely displayed works of art, like sculptures, statues, vases, precious objects and carpets, this detector does not interfere with the object itself. It can also be used when the object is not encased, as with sacral objects or ornaments. The unit is supervised and sends low battery indication.

### ⑤ MCT-100 S

#### Universal wireless transmitter

This fully supervised wireless transmitter is used for electronic security. With two built-in inputs for low-power, or wired detectors or a series of wired microswitches connected to it.

## Showcase components:

### ⑥ MCPIR-2000 S

#### Fully supervised wireless PIR detector

MCPIR-2000 S is an advanced, wireless PIR detector that incorporates a transmitter. Its coverage range is maximum 18x 18 m (60x 60 ft).

### ⑦ MCPIR-3000 S

#### Fully supervised wireless PIR detector

This advanced fully supervised ultra-low current wireless PIR motion sensor that incorporates a transmitter. Its coverage range is maximum 12 x 12 m (40 x 40 ft).

### ⑧ MCT-302 S

#### Wireless magnetic contact transmitter

MCT-302 S is a fully supervised wireless contact transmitter, with built-in magnetic reed switch and an auxiliary input for low-power detectors, or a series of wired microswitches connected to it.

## System components:

### ⑨ SAM-5

#### SpiderAlert Manager software program.

SAM-5 handles event messages and transfers commands to the SLC-5 controller.

### ⑩ SLC-5 UPS - SpiderBus controller

This network controller functions for data collection and as a computer interface.

### ⑪ SR-500 - Wireless receiver

This receiver is an interface unit between SpiderAlert® wireless transmitters and the SpiderBus. Transmitter/receiver ID combination indicates source and location of an event. The receivers alert when wireless jamming occurs.

### ⑫ SRP-51 UPS - SpiderBus repeater

This repeater is used to extend and segment the bus length for better control and diagnostics. Comes with power supply unit.

### ⑬ Paging System

This part of the system enables to send a message to a pager carried by a person on site, indicating the event and its location. The system includes a paging software, a local paging transmitter and alphanumeric pagers for the guards.

## How does the SpiderAlert System work ?

### Central Station

The central station activates an alarm or notifies security of an event.



### CCTV or Local Alert (optional)

CCTV or voice warning indicates that artwork has been touched or moved.



### Artwork

Wireless detectors send event signal to receiver.



### Security Guard

Security personnel respond to an event signal.

# SpiderAlert®

## Artwork Security System

*A masterpiece of art protection  
Designed by Visonetix especially for artworks,  
museums and galleries The SpiderAlert Artwork  
Security System provides a network of wireless  
and wired security devices and specialized  
wireless detectors for the protection of a wide  
variety of types of works of art. It is affordable,  
easy to install and cost-efficient to operate. By  
integrating SpiderAlert wireless detectors, time  
can be saved and installation costs can be  
reduced. With SpiderAlert, assistance can be  
summoned or an alarm can be sent at the press  
of a button. The system can identify the source  
and location of events for an instantaneous  
and accurate response. SpiderAlert is fully  
scalable for easy system expansion.*

*Visonetix, together with Visonic Ltd, with more  
than 25 years creating and producing quality  
security products, developed the SpiderAlert  
Artwork Security System to fulfill a need in the  
field for a superior monitoring system.*

*Continual development of the system ensures  
that SpiderAlert will meet your security needs  
now and in the future.*

## A masterpiece of art protection

### Visonic Group Companies

#### Visonic Ltd

Visonic Inc  
Visonic GmbH  
Visonic (Uruguay) Ltda  
VisAccess

#### Visonetix Ltd

VSI (Visonic Systems Inc.)  
Visonic (UK) Ltd  
Visonic Ibérica  
Visonic Ltd Singapore Representative Office

*Companies in this column represent  
SpiderAlert*



[www.visonetix.com](http://www.visonetix.com)

© Copyright, all rights reserved. SpiderAlert is a registered mark of Visonetix Ltd.  
Visonetix, VSI and Visonic (UK) Ltd reserve the right to change specification without  
any notice. Information correct at time of going to press.

 **Visonetix**  
Security and Control Networks