



## ***Introduction***

This guide is a quick start reference designed to walk a first time user through the basic steps needed to initially install and setup an EIRIS™ based VisAccess installation where the server and client runs on the same machine.

To initially configure your VisAccess installation, all you have to do is perform these 5 steps:

Step 1 – Utilize the EIRIS Setup Wizard to install EIRIS on the host computer

Step 2 – Use the EIRIS License Wizard to request a permanent software license key

Step 3 – Setup EV2 for VisAccess Configuration

Step 4 – Employ the EV2 client to configure the VisAccess Installation

Step 5 – Retrieve the permanent license key from the VT website

Step 6 – Install the permanent license key in the EV2 client

For advanced functionality this quick start guide should also be used in combination with the following support documentation:

- EIRIS Configuration Guide V4.7.1
- EV2 User Guide V4.7.1

These two documents are available for download (in PDF format) from VT's Partner Support Center: <http://visonictech.helpserve.com>.

---

## ***Minimum Hardware Requirements***

EIRIS based VisAccess installations can run on everyday desktop or laptop computers. In preparation for installing and configuring your installation review the following hardware requirements and recommendations.


- 1.7GHz - Intel Celeron/Pentium IV or AMD equivalent CPU
- Motherboard with integrated sound/graphics (8MB) and LAN (10/100 Ethernet)
- 512MB RAM Memory
- 20GB IDE Hard Drive
- 17" SVGA monitor (1024 x 768 screen resolution)
- 101 key keyboard
- 3-button PS/2 or USB mouse
- Operating System (MS 2000/2003 Server, 2000 or XP Pro)
- Cable or DSL internet connection

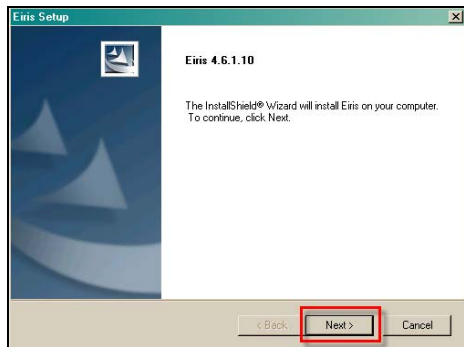
### Step 1 - Initial EIRIS Installation

The EIRIS Setup Wizard is an easy-to-use program that you download from VT's Partner Support Center: <http://visonictech.helpserve.com>.

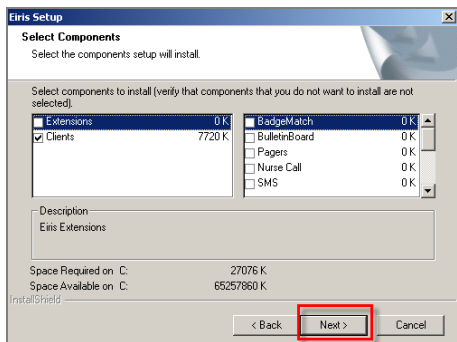
It provides simplified installation procedures for installing an EIRIS based VisAccess installation on a host computer.

►To run the EIRIS Setup Wizard:

1. Download the **Setup Wizard** to a convenient directory on the host machine.
2. Double-click the **EIRIS Exe**  icon; the Setup Wizard for EIRIS 4.7.1 appears.

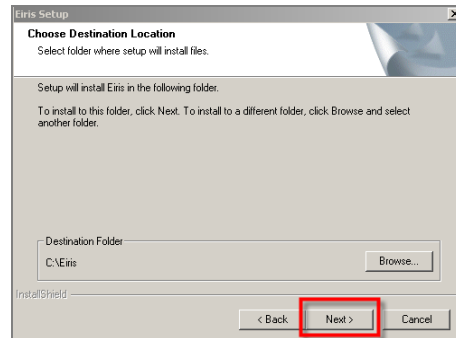


3. Click **Next**; the installation begins and the License Agreement pane appears.
4. Read the License Agreement; then click **Yes**; the Setup Type pane appears.
5. Select **EIRIS Server for Access Control**. Click **Next**; the Select Components pane appears

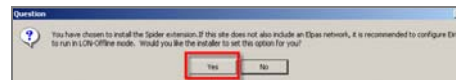


6. Select the **Client** option and Click **Next**; the Choose Destination Location pane appears.

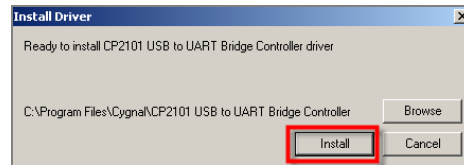
**Note:** By default, EIRIS installs to: C:\Eiris.



7. Click **Next**; the Setup Status pane appears.
- Note:** When installing an Access server, you will be asked, if EIRIS should be configured to run in LON-offline mode. Click **Yes**.



Additionally, when installing the Access Server, you will be asked, if the USB to UART bridge controller driver should be installed. Click **Yes**.



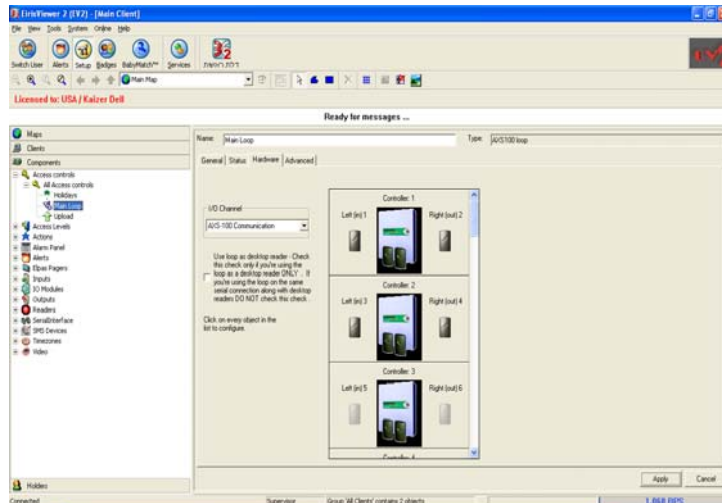
8. Once the install has completed, the Install Shield Wizard Complete form appears. Click **Finish**; then **Restart** the computer as prompted.

## Step 2 - License Key Request

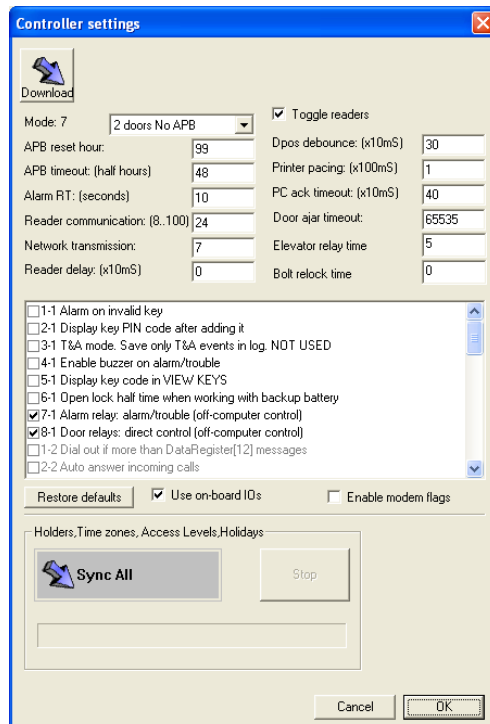
Additionally, the EIRIS License Wizard can be used to generate a request for an updated license key when supplementary readers are added to the original installation.

### ►To run the EIRIS License Wizard:

1. Go to EV2 setup screen.
2. On the left-hand side, select "components" tab.
3. Click "Access Controls" and then select "All Access control"
4. Select the loop that the lock can be found.



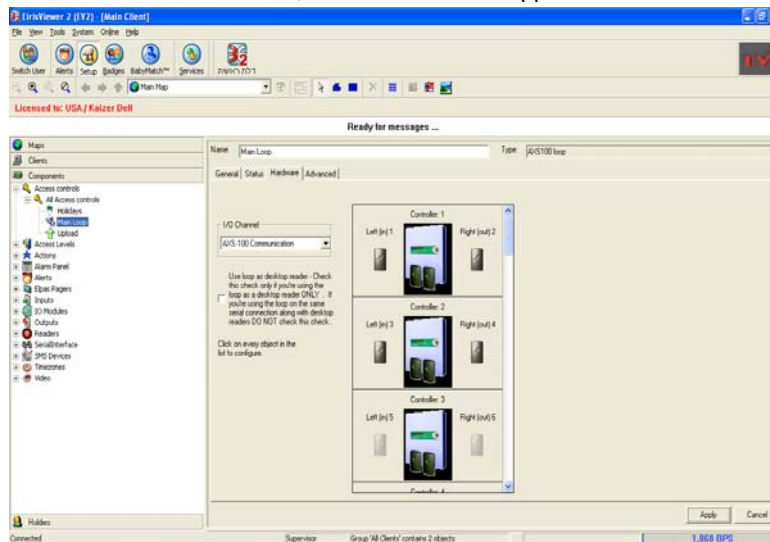
5. Click on the **Controller** that the lock is connected to; the Controller Settings box appears.



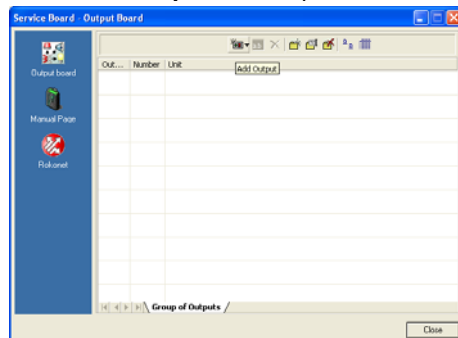
6. Enable the **Use Onboard IOs** option; then press **OK**.

*NOTE: If main menu buttons need to be used skip the next steps 7-11*

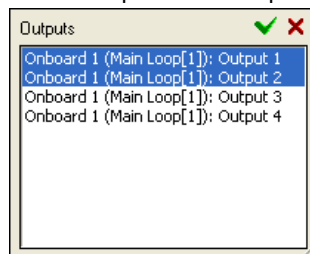
7. Press the **Services** toolbar; the Service Board appears.



8. Press **Add Output**; the Output Board dialog box appears

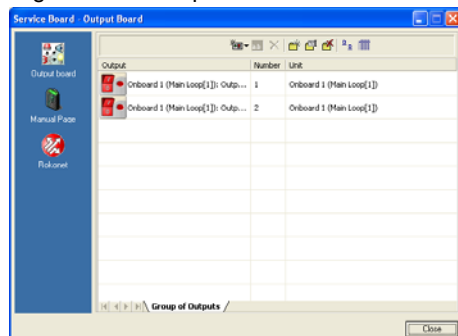


9. Select Output-1 and Output-2 and press on the green V mark



*NOTE: Output 1 represent reader one of the controller, output 2 represent reader two of the controller.*

10. Right click on output name and select "Rename" to rename the output.



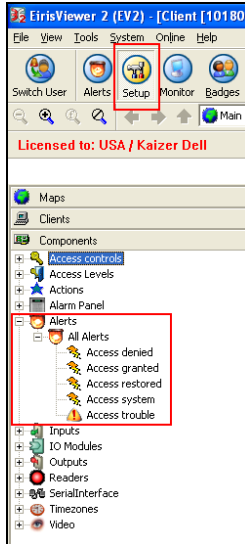
11. By pressing on the red button the door (that belong to that button) will be open for the unlock duration that set in the controller (default = 5 Sec).

**If main menu buttons need to be used do the following**

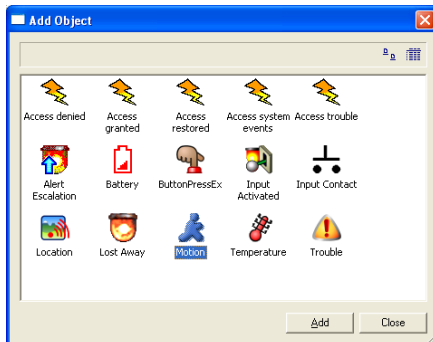
Use the System Settings Utility to configure a number of EV2's key global system settings.

►To setup EV2:

1. While on setup screen, go to components → Alert → All alerts.

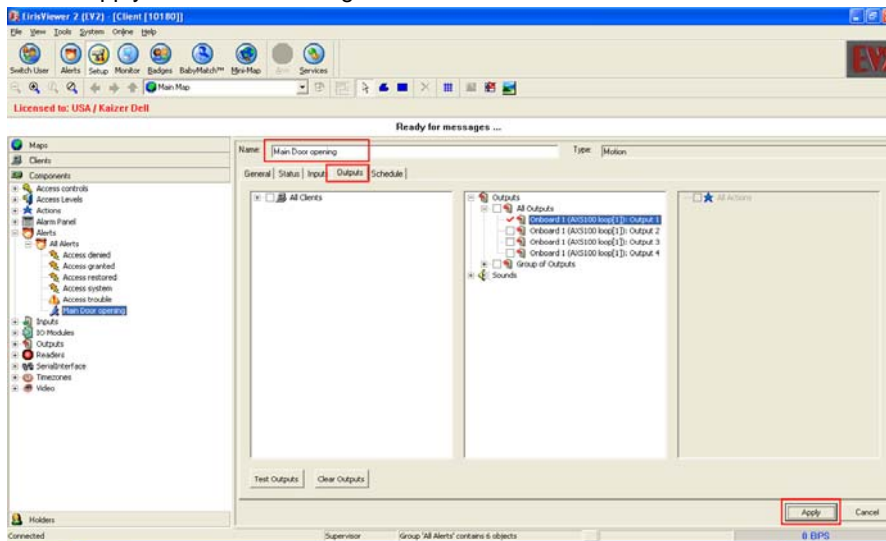


2. Right-click on **All Alerts** sub-branch and select **Add by type**, Select one of the alerts (no matter which one).



3. Rename the alert name to any convenient name.
4. Go to "Output" tab
5. Open the "Outputs" branch → "All outputs" (by clicking on the "+" next to the output icon)
6. Click on the checkbox of the door (s) / Output (s) that need to be open.
7. Double Click on the Icon of the output will open a time settings screen. In that screen set the unlock time duration (seconds) followed by pressing on "ok" button.

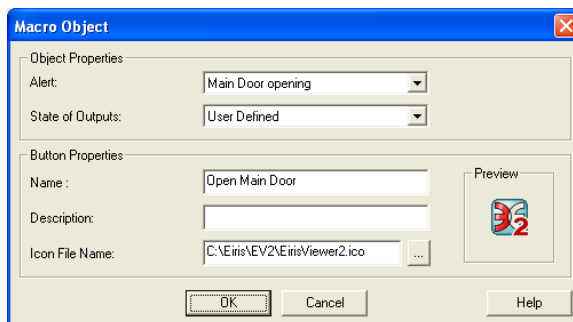
- Press "Apply" to save the settings



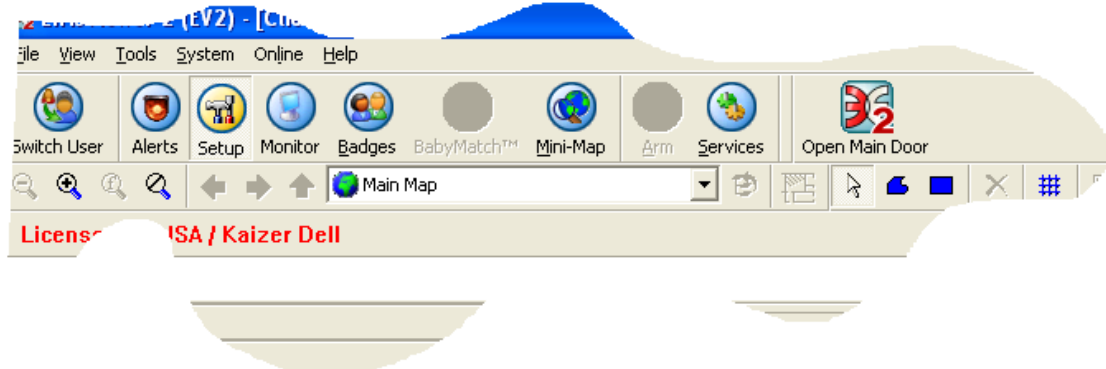
- Right-click on the right side of the EV2 main bar. Then select Add



- In the "Alert" field, select that created in step 13.

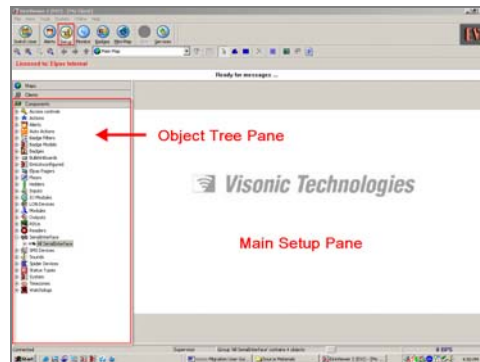


- Set "State Of Outputs" to be "User Defined"
- Set name for the button.
- Choose an icon for the button by pressing on
- Press OK
- Now the new button will appear on the Main menu bar. By pressing on it the Output / Door will be open and will be close after the user defined duration (step 18).



16. If more buttons need to be added, Start over from step 12.

17. Access the **Components Tree** by clicking the Component tab in the Object Tree pane.
18. Follow the **Configuration Procedures** as described in Step 4 below.



**NOTE:** Before attempting to configure the VisAccess installation, ensure that EIRIS is properly installed on the host server machine and that the server is physically connected to the AXS-100/200 controllers.

### Serial Interface Set Up

In this setup scenario, the EIRIS sever uses an RS-232 serial interface to communicate with the controllers via AXS-100 communication loops. Up to eight AXS-100 or 200 controllers can be connected on one communication loop to control a total of 16 readers configured for up to 16 doors. In larger installations, virtually an unlimited number of loops can be networked together

19. Enter the **Personnel Data** of the employee (holder).

- The **Name** of the employee in the 'Name' field.
- A suitable **Title** in the 'Title' field.
- Select an appropriate **Access Level**.
- Optionally, Enable the **Expiration** option and define an **Expiration Date**.
- The **ID Number** of the employee in the 'ID' field.
- The **Location** of the holder in the 'Location' field.
- Enter any supplemental **Details** that maybe helpful in any of the four 'Details' fields.
- The **Building Name** that the holder works in.

